



**CORNWALL  
ASSOCIATION OF  
WOODTURNERS**

**JULY 2023**

**Well here we are  
#2 of the new newsletter already!**

I sincerely hope that everyone is enjoying having a newsletter again and respectfully remind everyone that this is YOUR newsletter full of YOUR content.

So far I have received a total of  contributions towards it!

However - I live in hope. - (Hope to hear from you this month!)



<https://cornwallassociationofwoodturners.co.uk/>



<https://www.facebook.com/groups/683733965117180>



[cawsecretary@outlook.com](mailto:cawsecretary@outlook.com)

# Current C.A.W Committee 2023 - 2024.

<b>Name</b>	<b>Email</b>	<b>Phone</b>
Dave Chamberlain	dave@penhallowfarm.co.uk	07798 712395
Nick Dodge	nickdodge@hotmail.com	07532 206823
Chris Gladwell	chris@chrisgladwell.co.uk	07967 968556
Mary Murfin	marymurfin1@gmail.com	07790 986105
Brian Hobbs	brian.hobbs@mjmedical.com	07818 401590
Dave Frost	daveyfrost@hotmail.co.uk	07485 425022
David Evans	evans3518@outlook.com	07817 623336
David Sadler	davidsadler0504@gmail.com	07966 303365
Jonathan Nicholls	jonathan.nicholls@sky.com	07786 015938
Morag Clark	moragclarkms@gmail.com	07484 313183

Chairman	Dave Chamberlain
Vice Chairman	Nick Dodge
Secretary	Mary Murfin
Treasurer	Chris Gladwell

## Membership & Communications

Membership Secretary	Mary Murfin
Website	Pete Stubbs
Data Protection Officer	Jonathon Nicholls
Child Protection Officer	Jonathon Nicholls
Magazine Editor	Pete Stubbs

## Workshop

Health & Safety Officer	Nick Dodge
Workshop Manager	David Sadler

## Club Shop

Shop Manager	David Evans
Shop Assistants:	Ron Ashenden
	Colin Gooch
	Steve Snell
	Lawrence Moody

## Events and Fundraising

Events Coordinator External	Jonathon Nicholls
Events Coordinator Internal	Morag Clark
Charity Liaison Officer	Brian Hobbs
Raffle/Fundraising Co-ordinator	Brian Hobbs
TOTY & Trophies Co-ordinator	Sue Butler
AVI Equipment setup & operate	Graham Murfin
Catering	Vicky Thomas
Caretaker	Lawrence Moody

## Tutors

Mike Hosking, Terry Edwards, Gary Finnemore, Jim Davies,  
Dave Chamberlain, Dave Sadler, Sue Butler, Lawrence Moody,  
Colin Gooch

# Turner Of The Year (TOTY) Runs from November to October



Categories for Beginners, Novice, Intermediate and Advanced.

January - Box - Any turned item with a lid

February - Natural Edge Bowl - A turned bowl with a natural edge

March - Goblet - A drinking vessel with a stem

April - Open - Any turned item

May - Hollow Form - A hollow item where the inside has been turned blind

June - Miniature & \*Collaboration\* A turned item that when complete fits inside a 35mm film case \*Collaboration\* - see below

July - Toy - A turned item allowing you to use your imagination

August - Platter - A shallow plate, flat for at least 3/4 across the inside base

September - Bowl - A bowl turned from any wood

October - Decorated Turned Item - A turned item decorated in any way

November - Matching Pair - A pair of turned items of the same size

December - Open, \*Collaboration Trophy\* & \*Christmas Trophy\*

Open - Any turned item \*Collaboration Trophy\* and \*Christmas Trophy\* see below

\*Collaboration Trophy\* in June and December - An item undertaken by 2 or more members from different categories: Junior, Beginner, Novice, Intermediate and Advanced (Guild)

\*Christmas Trophy\*

This is a fun competition open to all. No separation based on ability and most entries are for amusement rather than showing technical expertise!

Medal winners for June 2023  
'MINIATURE'

**ADVANCED CATEGORY**



Gold Medal to Colin Gooch



Silver to Sue Butler



Bronze to Mike Hosking

Medal winners for June 2023  
'MINIATURE'

**INTERMEDIATE CATEGORY**



Gold Medal to Graham Murfin



Silver to Pete Stubbs



Nothing entered for bronze

Medal winners for June 2023  
'MINIATURE'

**NOVICE CATEGORY**



Gold Medal to Tony Le Fevre



Silver to John Bray



Nothing entered for bronze

Medal winners for June 2023  
'MINIATURE'

**BEGINNER CATEGORY**

**NO ENTRIES  
PLACED IN THIS CATEGORY  
THIS MONTH 🙄**



# COLLABORATION 2023.

Held in June and December

An item undertaken by 2 or more members from  
different categories:  
Junior, Beginner, Novice, Intermediate Advanced (Guild)



Winners of June 2023:  
Dave Sadler (Advanced)  
Pete Stubbs (Intermediate)



Runners up.



## Membership.

Renewal membership fees were due 1st July

So if you have not already paid  
you need to do so NOW!

Mary could have taken your payment on the 30th June Club Night.

But if you still haven't paid.

She will be at the Club from

6.30 to 7.00 pm. on 3rd, 4th, 5th & 6th July

to accept your payment.

**PLEASE NOTE  
IF YOU HAVE NOT PAID UP  
BY NOW  
YOU ARE NOT INSURED  
TO USE  
THE CLUB FACILITIES**

From Mary Murfin (Membership):

Membership can be paid by one of the following ways:

In person at any of this week's turning nights OR

By BACS to HSBC, TRURO Sort Code 40-44-34 Account 11233459  
Cornwall Association of Woodturners (Ref: your name).  
If paying by this method, please advise me.

By CHEQUE BY POST payable to Cornwall Association of  
Woodturners. Send to Mary Murfin, CAW Secretary, 57 Church Way,  
Falmouth. TR11 4SG  
(Put your name and membership number on the back of the cheque).

This is the  
first  
increase in  
membership

for  
over 12  
years.



CAW Membership is still great  
value at £40 per year,

That's only 77p per week.

**Pro shop tips courtesy of Andy Coates**  
as published in 'Woodturning'.

**Initial mounting of thin section cross-grain stock.**



Ring magnet attached to a standard screw chuck

Screw chucks are incredibly useful holding devices, and people are often surprised at the capacity for holding these simple devices have. The only real problem with them is the depth you have to drill into the blank in order to use them. With a blank cut from a thin board this can preclude their use. What you can do is use a spacer to reduce the required depth of screw hole. It should be noted that this does result in reduced holding capacity and surety, but we are usually mounting lighter, smaller workpieces when the depth of mounting hole is an issue.

You could simply use discs of plywood, MDF, or similar to act as spacers, but a useful alternative is a large ring magnet. They attach to the chuck magnetically, which means they don't slip while securing the blank, are easily stored on the headstock of the lathe where they can then serve as a tool holder and, because they are far harder than some of the alternatives, they will not deform and put the workpiece out of true.

You can buy larger ring magnets, but all of mine were salvaged from old magnetrons from microwave ovens.

A local domestic appliance shop may well have piles of scrap magnetrons it would be happy to get rid of. Disassembly is usually an obvious process and the only things you need are work gloves, pliers and flat-head and cross-head screwdrivers.

Remember, always make sure work is secure before you switch on the lathe and always use a tailstock as long as you can for extra support when turning.



Although I covered this last month - I thought - due to the lack of content, that I might mention it again!

All members should also be aware that the club has a thriving Facebook page which can be found at

<https://www.facebook.com/groups/683733965117180> or by simply searching 'Cornwall Association of Woodturners', on facebook.com

Please use this facility that has been set up for your benefit.

The platform can be used for:

Chatting with each other.

Sharing hints and tips.

Answering queries.

Sharing photos of your work from home.

If you are on Facebook but not yet linked to the group, please ask to join and we will be pleased to approve your request.

If you're not already on Facebook. How about setting yourself up, once done, simply ask to join the group.

If I`m not on  
**facebook**

for more than 2 days..  
...CALL THE POLICE!!!

# CHECK

The club are extremely lucky to have the facilities that we have.

*There are very few things that Wheel Jane ask of us,*

# 20

But speed is one of them

*So please adhere to it.*

The last thing we want is for our members to put our lease at risk by not following these simple requests.

# SPEED

**FURTHER NOTE.**

**THE SPEED LIMIT REDUCES TO 10MPH WHEN YOU REACH THE LEVEL THAT OUR WORKSHOP IS ON.**



## Contributions for the magazine:

Please send me some photo's and a little write up of maybe what you have been doing at home in your own workshops or any ideas you are currently playing with that you would like to share with others or litteraly anything else that you think others may be interested in - **please share**.

You can email any contributions to [webmaster4caw@gmail.com](mailto:webmaster4caw@gmail.com) and wherever possible they will be included in the next edition of the magazine.

**Remember this is your magazine, please help to fill it with worthwhile content.**



# Club Nights.

Held on the last Friday of the month.

Be at the club before the gate shuts at 7pm

Demonstrations - Talks - TOTY - Raffle - Shop - Food

We are struggling to fill the demonstrating slots on club nights.

If you may have something others maybe interested in seeing,

Please please come along and show them and help out the

club! Just let a committee member know.

**30th June** Was Cedric Boyns - see next page for what you missed if you were unable to attend.

**28th July** To Be confirmed.

**25th August** Two for One! 2 lathes set up with Mike Hoskins & Terry Edwards demonstrating the making of christmas decorations.

**29th September** - To Be Confirmed.

## Demo Days.

Usually held twice a year. We invite professional turners from across the country to come to the club and demonstrate.

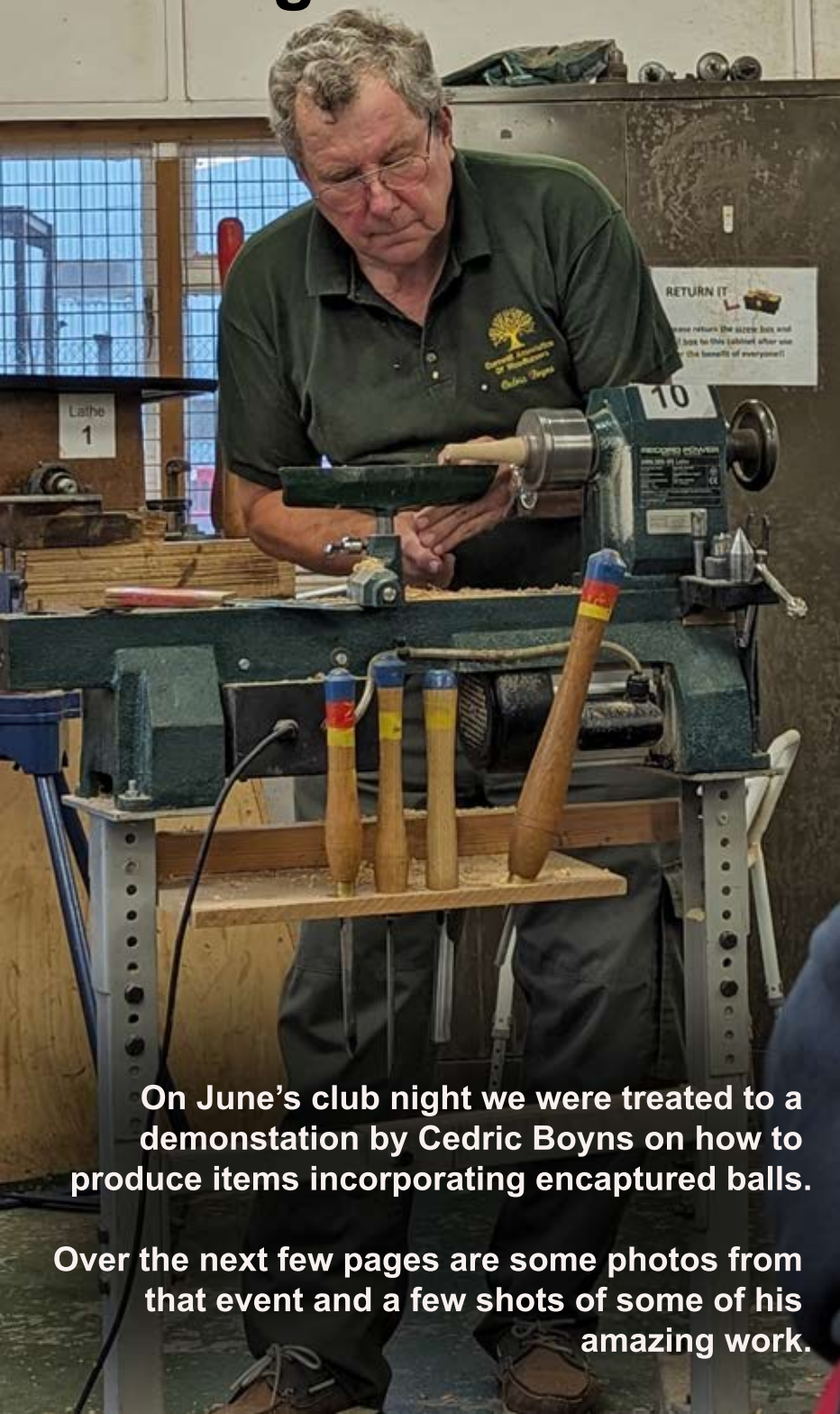
£15 for the day (10-4)

Includes all refreshments & food

Keep checking here for dates, cost etc



# Club Nights.



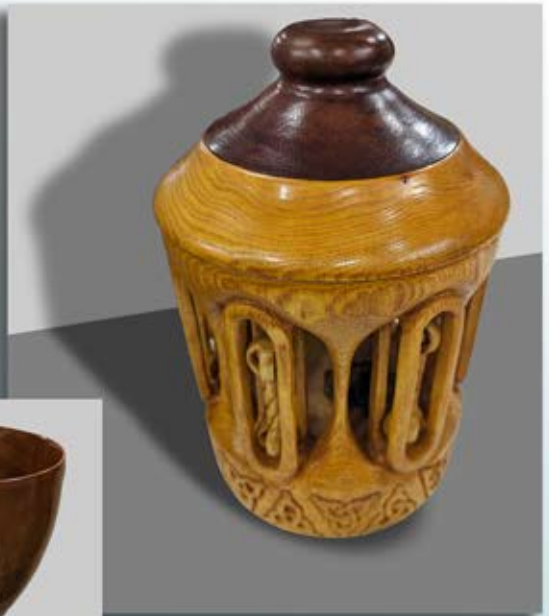
**On June's club night we were treated to a demonstration by Cedric Boyns on how to produce items incorporating encaptured balls.**

**Over the next few pages are some photos from that event and a few shots of some of his amazing work.**









We are very grateful to Cedric for giving up his time to show us his secrets, especially for filling the slot at the demo night.

We are currently struggling to fill the demonstrating slots on club nights. If you have something that others may be interested in seeing, please come along and show it and help out the club! You can speak to Morag Clark, our internal events coordinator, or simply let any committee member know.

# LATEST



## FROM THE COMMITTEE

Nothing this month as there was no committee meeting in June.



Events being attended by CAW this year:

Sat 1st & Sun 2nd July- Merlin Summer Fair, Hewaswater, nr St Austell.  
(Our new Club Charity)

Sun 23rd July - Marie Curie Classic Cars & Country Show at  
Trewithen Gardens, Probus.

Fri 28th, Sat 29th & Sun 30th July - Boconnoc Steam Fair,  
Boconnoc Estate, nr Lostwithiel.

Two more volunteers are needed for the Friday and Sunday  
and one more for the Saturday.

(Sign-up sheet is on the workshop wall for anyone interested in going.  
Alternatively, if you email Mary she will add your name to the list).

St Mawgan Rally on Sat 16th & Sun 17th Sept.



## Latest shop prices:

The latest prices are now in:

### Wood blanks:

Various types and sizes including pen blanks - From £1.50

### Abrasives & Accessories:

Mirka Abranet 70 x 125:

Mixed Pack: (80,120,180, 240,320,400 Grits) - £4.00 per pack

80 Grit: single pieces -£1.00 each

Hook & Loop 150mm x 0.5m:

6 x Mixed Grits - £9.40 per pack

J Flex 115mm x 1m:

80,100,120,180,240,320,400,600 Grits - £3.00 each grit

Mirka Carat Flex

115mm x 0.5m :

180,240,320,400 Grits - £0.80 each grit

Nyweb - £0.50

Sanding Paddle - £8.20

Interface Pad 70mm x 200mm - £7.00

Mirka Backing Pad 10mm - £10.00

Robert Sorbey Pro-Edge Abrasive Belts

Ceramic:

80 grit or 120 grit Aluminium Oxide: 180 or 240 grit - £4.85 each £2.50 each

### Finishing Products - Chestnut:

Cellulose Sanding Sealer - Spray - £9.00

Cellulose Sanding Sealer - 500ml Can - £10.80

Acrylic Sanding Sealer - Spray - £8.10

Woodwax 22 - 450ml Clear - £11.00

Woodwax 22 - 450 ml Medium, Golden or Mellow Brown - £10.25 each

Liming Wax - 450ml - £12.00

Microcrystalline Wax - 225ml - £11.40

Cut'n'Polish - 225ml - £10.20

Hard Wax Oil - 500ml Gloss or Satin - £16.50

Ebonising Lacquer - 400ml Acrylic Spray - £8.50

Burnishing Cream - 500ml - £13.20

### **Finishing Products - Chestnut (continued):**

Friction Polish - 500ml - £16.20

Tung Oil - 500ml - £10.80

Lemon Oil - 500ml - £10.80

Finishing Oil - 500ml - £10.20

End Seal - 1,000ml - £9.90

Spray Lacquer - 400ml Acrylic: Gloss or Satin - £8.10

Spray Lacquer - 400ml Melamine: Gloss - £9.00

Spirit Stain - 25ml Golden or Mid Oak. Brown, Red, Light  
or Antique Mahogany - £1.50 each

Spirit Stain - 25ml Teak, Pine, Rosewood or Yew - £1.50 each

Spirit Stain - 12 x 25ml Pack of Mixed Colours - £15.50

### **Other:**

Club Mix Cellulose Sanding Sealer - 1 Litre (Diluted 50/50) - £7.00

Food Safe Finish - 500ml Pharmaceutical Grade Mineral Oil - £5.00

CA Glue - 20g Medium Viscosity - £1.20

CA Glue - 50g Medium Viscosity - £4.00

CA Glue - 50g Low Viscosity (Thin Grade) - £5.00

Beeswax Stick - £2.25

Liberon Coloured Wax - £3.75

Pritt Type Glue Sticks - £0.75

Hot Melt Glue Sticks - 11mm x 270mm - £0.25

Superglue - Gorilla, Sealfix or Loctite - £5.00 each

Superglue - Bostik or Poundland - £1.00 each

### **Project Kits & Accessories:**

Bud Vase Tubes - Small: Single or Pack of 5 - £0.25 or £1.00

Bud Vase Tubes - Medium: Single - £0.20

Bud Vase Tubes - Large: Single - £0.50

Mini Key Ring Pen Kit - Chrome - £2.75

Cigar Pen Kit - Satin - £4.50

Pen Kits - Slimline - £2.60

Inserts - Slimline - £2.00

Refills - Slimline - £0.50

7mm Tubes - Pack of 4 - £2.20

Twist Pen Refills - Blue or Black: Single - £0.50

Twist Pen Refills - Pack of 5 - £1.75

Twist Pen Refills - Pack of 10 - £4.50

Pen Bags - Various Colours: Single - £0.60

Pen Boxes - Plastic: Single - £0.50

Candle Cups - Brass - Pack of 4 - £6.50

Candle Cups - Brass Finish - Single - £1.00

Candle Cups - Steel with Bezel - Single - £2.50

Candle Cups - Copper Finish - Single - £1.00

Candle Cups - Tea Light Cups - £0.75

### **Project Kits & Accessories (continued):**

Paper Clip - £2.00

Bottle Opener - £2.50

Letter Opener - £5.70

Compass - £4.40

Egg Timer - 3 minutes - £2.00

Egg Timer - 14 minutes - £3.00

Gold & Silver Leaf - £1.99

Pepper Grinder - 6 inches Ceramic - £4.45

Box Hinges - 2 inches Plain or Patterned - £2.50

Box Hinges - 2.5 inches - £3.00

Box Hinges - 3 inches - £3.50

Photo/Note Holder - £3.20

Lamp Holder, inc Plate - £5.00

Lamp Holder, inc Plate - Safety Switch Version - £5.50

Letter Opener - £3.00

Key Ring - £0.10

Crushgrind Pepper/Salt Mill Kit - 135mm or 95mm - £5.75 or £6.25

### **Sundries:**

Double Sided Tape - £1.25

Silverline Centre Finder - £2.60

Safety Glasses - £5.50

Safety Overglasses - £5.50

Polycarbonate Centre Finder - 200mm diam. - £7.50

Polycarbonate Centre Finder - 300 mm diam - £12.00

Plastic Bottle Dispenser with Nozzle - £1.00

Face Plate Ring - Record - £22.50

Face Plate Ring - Charnwood - £13.00



### **Club Clothing:**

Polo shirts - £12.50 +VAT

Sweatshirt - £15.50 +VAT

Full Zip Fleece - £19.95 +VAT

Full Zip Smocks - (Lovells Workwear) - £40 +VAT

If you wish to order any of the following (which include embroidery) please email [susanbutler29@hotmail.com](mailto:susanbutler29@hotmail.com)

PPE Awareness from Nick Dodge,  
CAW Health and Safety Officer.

## PPE Awareness

I hope you are enjoying the warm weather and are still able to turn.

At times like this when we do not want to wear too much it is all too easy to discard what we would normally wear for our protection and wellbeing, so I thought I would give you all a reminder of what Personal Protective Equipment (PPE) is required when turning in the club and why.

Although equipment needs to be to specific standards, it is for the individual to select their own PPE.

**Respiratory Protection-** A suitable close fitting P3 mask should be worn to prevent the inhalation of respirable dust, this is of particular concern when working with hard woods, many of which are carcinogenic.

**Eye Protection-** Suitable eye protection should be worn to prevent both dust and larger shavings from entering the eye. Ideally this should be to EN166 standard to ensure it also provides some protection from impact.

**Hearing Protection-** Where noise levels exceed certain levels, some form of PPE should be worn to protect your hearing. In industry an employer has to provide hearing protection when the background noise level reaches 80dB, when that noise level reaches 85dB the hearing protection has to be worn.

Most of the activities within the club workshop do not generate a noise level where protection would be required, however, you need to be aware that when the bandsaw and extractor are in operation the noise level can exceed 90dB.

Also occasionally, fairly high noise levels are created when particular turning activities are being carried out.





## PPE Awareness - Continued.

As well as the specific types of equipment mentioned on the previous page, it is very important that we also consider the rest of our body.

**Gloves-** Gloves should not be worn when using any form of rotating equipment. This is to prevent the possibility of a glove catching on the wood being turned or the chuck, resulting in the operative's hand being drawn into and around the wood or chuck.

**Clothing-** It is recommended that suitable clothing which covers the arms and legs is worn. If not wearing a smock the top should be close fitting ensuring there is nothing liable to be caught which may lead to the operative being drawn in.

If wearing a short-sleeved smock, you should not wear anything else on the arms.

You should also cover your legs for protection from flying debris, sharp tools and collision with fixed equipment or other obstacles.

**Shoes-** Shoes must be substantial and fully enclosed and ideally should be safety footwear. This is to provide protection from anything being dropped, shaving from your turning activity and also from anything else which may be on the floor whilst you move around the workshop.

Additionally, no jewellery should be worn on the fingers or wrist, this is to remove the possibility of the jewellery being caught with significant consequences for the wearer.

The only exception to this is where you do not want to remove a wedding ring, in this case it should be covered with tape to minimise the possibility of it being caught.

I hope no one ever sustains an injury whilst turning.

Protecting yourself in line with the above will go some way to ensuring you do not.

Happy turning

Nick Dodge  
CAW Health & Safety





Well, that's all I have for you this month.

Again, may I urge you to contribute, please?

Without your contributions, this newsletter is in real danger of soon becoming very repetitive!

I intend to continue it as a monthly publication at this stage, even without contributions, just to keep the TOTY photos updated.

However, since I am already publishing those photos on our webpage every month, there will soon be little need for a newsletter without content.

If you have anything at all that you would like to contribute, please send it to me at [webmaster4caw@gmail.com](mailto:webmaster4caw@gmail.com).

See you next month!.